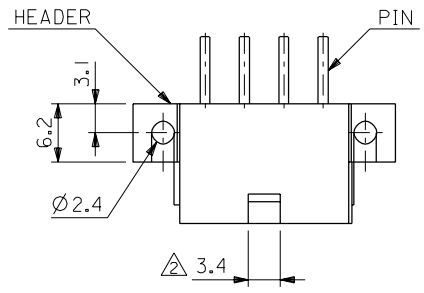


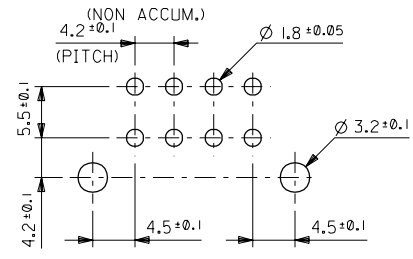
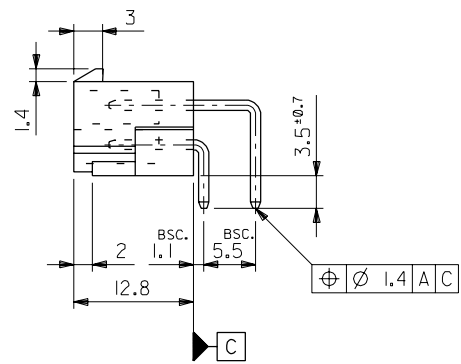
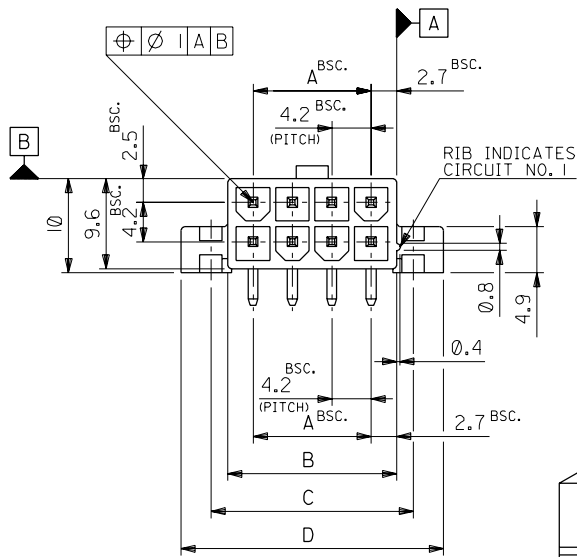
EDP NO. SD-5569-NA-**-**
 SEE SHEET 2 OF 2
 DIMENSIONS IN METRIC DO NOT SCALE DRAWING



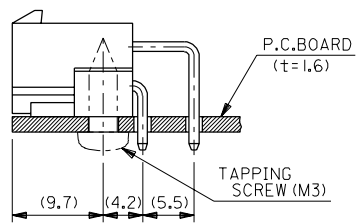
NOTES

1. MATES WITH : 5557 SERIES
- △ IN CASE OF 2 CIRCUITS HEADER, THIS DIMENSION SHOULD BE 4.2mm.
3. MATERIAL & FINISH

ENG. NO.	HEADER MATERIAL	PIN MATERIAL	FINISH OF PIN
5569-NA1	NYLON 66, UL94V-2	BRASS (1.07 SQUARE)	TIN OVER COPPER
↑ -NA1-210	NYLON 66, UL94V-0		
-NA1-310	G.F. 30% PCT, UL94V-0		
-NAG1	NYLON 66, UL94V-2		GOLD 0.76μm MIN. OVER NICKEL 1.27μm MIN.
-NAG1-210	NYLON 66, UL94V-0		
-NAG1-310	G.F. 30% PCT, UL94V-0		
-NAIG3	NYLON 66, UL94V-2		GOLD 1.27μm MIN. OVER NICKEL 1.27μm MIN.
-NAIG3-210	NYLON 66, UL94V-0		
-NAIG3-310	G.F. 30% PCT, UL94V-0		
-NAIS	NYLON 66, UL94V-2		TIN 2.54μm MIN. OVER NICKEL 1.27μm MIN.
↓ -NAIS-210	NYLON 66, UL94V-0		
5569-NAIS-310	G.F. 30% PCT, UL94V-0		



RECOMMENDED P.C.BOARD PATTERN



RECOMMENDED INSTALLATION PATTERN

61.6	55.2	51.6	46.2	24
57.4	51	47.4	42	22
53.2	46.8	43.2	37.8	20
49	42.6	39	33.6	18
44.8	38.4	34.8	29.4	16
40.6	34.2	30.6	25.2	14
36.4	30	26.4	21	12
32.2	25.8	22.2	16.8	10
28	21.6	18	12.6	8
23.8	17.4	13.8	8.4	6
19.6	13.2	9.6	4.2	4
15.4	9	5.4	—	2
D	C	B	A	NO. OF CKTS.

角度 ANGLE	公差	記号 LTR	変更内容 REVISION RECORD	DR. CHK.	日付 DATE
30°以上 OVER	+0.4	J	REVISED (J00695)	H.H.	'90/6/23
10°以上 30°未滿 UNDER	+0.3	H	REVISED & REDRAWN (J00638)	H.H. Y.Y	'90/6/8
10°未滿 UNDER	+0.2	G	REVISED & REDRAWN (J00449)	H.H. Y.Y	'90/4/17
一般公差 GENERAL TOLERANCES					

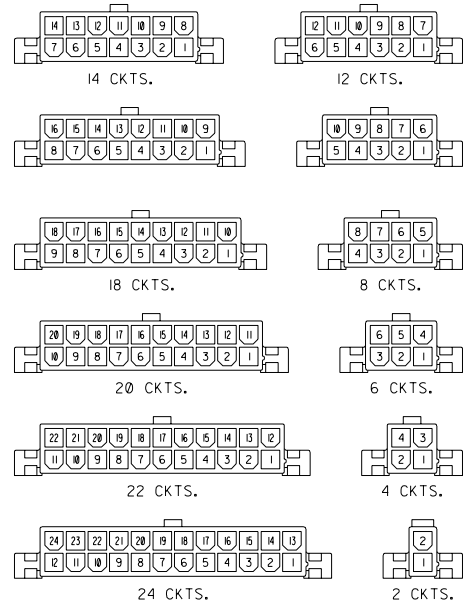
材料 MATERIAL	SEE NOTE 3	MOLEX-JAPAN CO.,LTD. 日本モレックス株式会社
仕上げ FINISH	SEE NOTE 3	
適用電線範囲 WIRE RANGE	— — —	EDP. NO. SEE SHEET 2 OF 2
被覆外径 INS. RANGE	— — —	ENG. NO. SHEET 1 OF 2 REV J
DRAWN BY '90/4/17 H.HIRAMOTO	CHK'D BY '91/07/04 M.FUKUSHIMA	TITLE 名称 NEW MINI. FIT CONN. RIGHT ANGLE HEADER ASS'Y WITH FLANGE
APP'D BY '91/07/04 M.ENOMOTO	尺度 SCALE 2 - 1	

ENG. NO.
SD-5569-NA*-*

EDP NO.
SEE CHART

MM DIMENSIONS IN METRIC DO NOT SCALE DRAWING

8 7 6 5 4 3 2 1



CIRCUIT SIZE LAYOUT
(SCALE : 1-1)

NOT TOOLED	5569-24AIS-310	NOT TOOLED	5569-24AIG3-310	NOT TOOLED	5569-24AGI-310	NOT TOOLED	5569-24AI-310	24
↑	↑ -22AIS-310	↑	↑ -22AIG3-310	↑	↑ -22AGI-310	↑	↑ -22AI-310	22
	-20AIS-310		-20AIG3-310		-20AGI-310		-20AI-310	20
	-18AIS-310		-18AIG3-310		-18AGI-310		-18AI-310	18
	-16AIS-310		-16AIG3-310		-16AGI-310		-16AI-310	16
	-14AIS-310		-14AIG3-310		-14AGI-310		-14AI-310	14
	-12AIS-310		-12AIG3-310		-12AGI-310		-12AI-310	12
	-10AIS-310		-10AIG3-310		-10AGI-310		-10AI-310	10
	-08AIS-310		-08AIG3-310		-08AGI-310		-08AI-310	8
	-06AIS-310		-06AIG3-310		-06AGI-310		-06AI-310	6
↓	↓ -04AIS-310	↓	↓ -04AIG3-310	↓	↓ -04AGI-310	↓	↓ -04AI-310	4
NOT TOOLED	5569-02AIS-310	NOT TOOLED	5569-02AIG3-310	NOT TOOLED	5569-02AGI-310	NOT TOOLED	5569-02AI-310	2
EDP NO.	ENG. NO.	EDP NO.	ENG. NO.	EDP NO.	ENG. NO.	EDP NO.	ENG. NO.	CKT. SIZE
5569-NAIS-310		5569-NAIG3-310		5569-NAGI-310		5569-NAI-310		
39-31-4249	5569-24AIS-210	NOT TOOLED	5569-24AIG3-210	39-29-4249	5569-24AGI-210	39-29-1247	5569-24AI-210	24
↑ -4229	↑ -22AIS-210	↑	↑ -22AIG3-210	↑ -4229	↑ -22AGI-210	↑ -1227	↑ -22AI-210	22
-4209	-20AIS-210		-20AIG3-210	-4209	-20AGI-210	-1207	-20AI-210	20
-4189	-18AIS-210		-18AIG3-210	-4189	-18AGI-210	-1187	-18AI-210	18
-4169	-16AIS-210		-16AIG3-210	-4169	-16AGI-210	-1167	-16AI-210	16
-4149	-14AIS-210		-14AIG3-210	-4149	-14AGI-210	-1147	-14AI-210	14
-4129	-12AIS-210		-12AIG3-210	-4129	-12AGI-210	-1127	-12AI-210	12
-4109	-10AIS-210		-10AIG3-210	-4109	-10AGI-210	-1107	-10AI-210	10
-4089	-08AIS-210		-08AIG3-210	-4089	-08AGI-210	-1087	-08AI-210	8
-4069	-06AIS-210		-06AIG3-210	-4069	-06AGI-210	-1067	-06AI-210	6
↓ -4049	↓ -04AIS-210	↓	↓ -04AIG3-210	↓ -4049	↓ -04AGI-210	↓ -1047	↓ -04AI-210	4
39-31-4029	5569-02AIS-210	NOT TOOLED	5569-02AIG3-210	39-29-4029	5569-02AGI-210	39-29-1027	5569-02AI-210	2
EDP NO.	ENG. NO.	EDP NO.	ENG. NO.	EDP NO.	ENG. NO.	EDP NO.	ENG. NO.	CKT. SIZE
5569-NAIS-210		5569-NAIG3-210		5569-NAGI-210		5569-NAI-210		
39-31-4248	5569-24AIS	NOT TOOLED	5569-24AIG3	39-29-5243	5569-24AGI	39-29-1248	5569-24AI	24
↑ -4228	↑ -22AIS	↑	↑ -22AIG3	↑ -5223	↑ -22AGI	↑ -1228	↑ -22AI	22
-4208	-20AIS		-20AIG3	-5203	-20AGI	-1208	-20AI	20
-4188	-18AIS		-18AIG3	-5183	-18AGI	-1188	-18AI	18
-4168	-16AIS		-16AIG3	-5163	-16AGI	-1168	-16AI	16
-4148	-14AIS		-14AIG3	-5143	-14AGI	-1148	-14AI	14
-4128	-12AIS		-12AIG3	-5123	-12AGI	-1128	-12AI	12
-4108	-10AIS		-10AIG3	-5103	-10AGI	-1108	-10AI	10
-4088	-08AIS		-08AIG3	-5083	-08AGI	-1088	-08AI	8
-4068	-06AIS		-06AIG3	-5063	-06AGI	-1068	-06AI	6
↓ -4048	↓ -04AIS	↓	↓ -04AIG3	↓ -5043	↓ -04AGI	↓ -1048	↓ -04AI	4
39-31-4028	5569-02AIS	NOT TOOLED	5569-02AIG3	39-29-5023	5569-02AGI	39-29-1028	5569-02AI	2
EDP NO.	ENG. NO.	EDP NO.	ENG. NO.	EDP NO.	ENG. NO.	EDP NO.	ENG. NO.	CKT. SIZE
5569-NAIS		5569-NAIG3		5569-NAGI		5569-NAI		

材料 MATERIAL		SEE NOTE 3		MOLEX-JAPAN CO.,LTD. 日本モレックス株式会社	
仕上げ FINISH		SEE NOTE 3		EDP. NO.	
適用電線範囲 WIRE RANGE		—H—		SEE CHART	
被覆外径 INS. RANGE		—H—		ENG. NO. SHEET 2 OF 2	
DRAWN BY 90/4/17 H.HIRAMOTO		CHK'D BY 91/07/04 M.FUKUSHIMA		REV J	
APP'D BY 91/07/04 M.ENOMOTO		尺度 SCALE —H—		TITLE 名称 NEW MINI. FIT CONN. RIGHT ANGLE HEADER ASS'Y WITH FLANGE	

角度 ANGLE	±30	J	SEE SHEET 1 OF 2	H.H	90/6/23	適用電線範囲 WIRE RANGE	—H—
30以上 OVER	±0.3	H	SEE SHEET 1 OF 2	H.H	90/6/8	被覆外径 INS. RANGE	—H—
10以上 未滿 UNDER	±0.25	G	SEE SHEET 1 OF 2	H.H	90/4/17		
未滿 UNDER	±0.2			H.H			
一般公差 GENERAL TOLERANCES			REVISION RECORD	DR. CHK.	DATE		